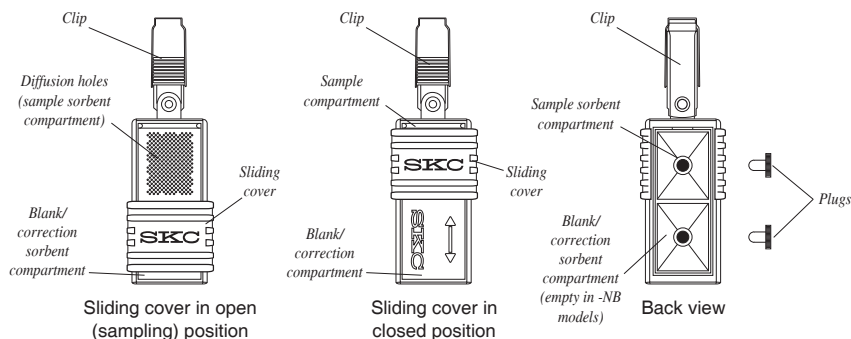




# Operating Instructions

863 Valley View Road, Eighty Four, PA 15330  
724-941-9701 • skcinc.com

## ULTRA Passive Samplers Cat. No. 690 Series (Prefilled)



The ULTRA Passive Sampler Cat. No. 690 Series (prefilled) includes models with blanks and without blanks (-NB).

### Applications

SKC patented\* prefilled ULTRA® Passive Samplers provide for low ppb to ppt detection of organic vapors in ambient and indoor air.

### Performance Profile

<b>ULTRA Pre-filled Samplers</b>	690-101, -103, -104, -106; 690-101-NB, -103-NB, -104-NB, -106-NB;	690-105, -105-NB
<b>Sampling Rates</b>	Go to the SKC Passive Sampling Guide at <a href="http://www.skcinc.com">www.skcinc.com</a>	
<b>Analysis</b>	Thermal desorption (TD); gas chromatography (GC)	Solvent extraction; GC
<b>Shelf-life</b>	Limited; check expiration date on packaging.	
<b>Storage</b>	Store at ≤ 39.2 F (4 C) in a clean, organic solvent-free environment	
	Before sampling: Up to 30 days After sampling: 21 days	Before sampling: Up to 6 months After sampling: 21 days
	<b>Caution:</b> Do not store with food.	

\*U.S. Patent No. 6,607,581

# Sampling

1. Open pouch. Remove sampler.
  - a. Do not discard pouch.
  - b. Store pouch in a clean, organic solvent-free environment.
2. Record the following:
  - a. **Sample ID** on pouch and sampler I.D. label
  - b. **Sampling location** on pouch
  - c. **Date sample taken** on pouch

❗ **Do not use Sharpie® markers or equivalent to mark label or pouch as these can off-gas VOCs.**

3. Clip sampler(s) in appropriate location.
  - a. **Indoors:** Clip sampler(s) to stand accessory (Cat. No. 690-302) and locate at appropriate height.
  - b. **Outdoors:** Clip sampler(s) inside shelter (open on two ends and bottom to allow air to flow freely). Hang shelter securely at the appropriate height.

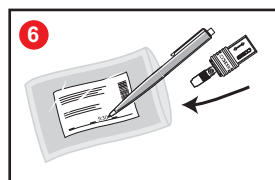
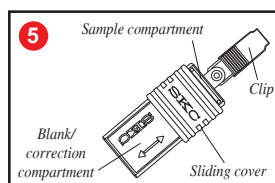
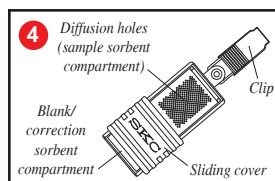
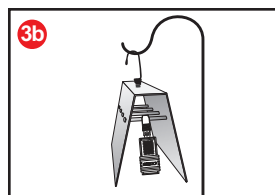
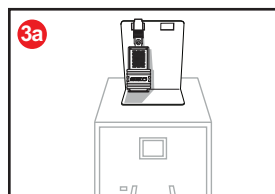
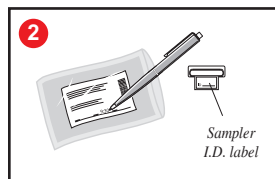
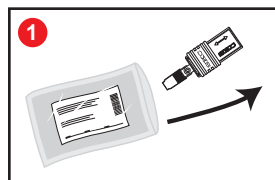
❗ **Ensure diffusion holes in sampler are not obstructed in any way.**

4. Start sampling: Slide sampler cover to open position (diffusion holes visible). Write sample start time on pouch label.

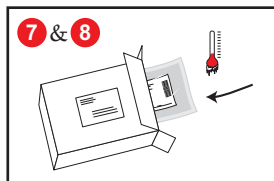
5. Stop sampling: Slide sampler cover to closed position (arrow and SKC visible). Write sample stop time on pouch label.  
**Important:** Measure and record ambient temperature and atmospheric pressure. Include in information sent to the laboratory.

6. Place sampler in its resealable pouch **immediately** after sampling.

❗ **Ensure sample ID on sampler matches sample ID on pouch.**



7. Seal pouch(es). Place pouch(es) in container with cool pack.
8. Use expedited shipping to send sample(s), pertinent information, and Chain of Custody form(s) to a laboratory for analysis.



## Ordering

<b>ULTRA Passive Samplers,<sup>#</sup> pk/5, prefilled with:</b>	<b>Cat. No.</b>
<b>Anasorb® GCB1,<sup>‡</sup> 370 mg in each compartment</b>	<b>690-101</b>
<b>Chromosorb 106,<sup>¥</sup> 285 mg in each compartment</b>	<b>690-103</b>
<b>Tenax TA, 253 mg in each compartment</b>	<b>690-104</b>
<b>Anasorb CSC, 500 mg in each compartment</b>	<b>690-105*</b>
<b>Carbopack X, 400 mg in each compartment</b>	<b>690-106</b>
<b>Anasorb GCB1,<sup>‡</sup> 370 mg</b>	<b>690-101-NB</b>
<b>Chromosorb 106,<sup>¥</sup> 285 mg</b>	<b>690-103-NB</b>
<b>Tenax TA, 253 mg</b>	<b>690-104-NB</b>
<b>Anasorb CSC, 500 mg</b>	<b>690-105-NB*</b>
<b>Carbopack X, 400 mg</b>	<b>690-106-NB</b>

<sup>#</sup> Limited shelf-life; see Storage specifications in Performance Profile

<sup>‡</sup> Comparable to Carbopack B

<sup>¥</sup> For additional information on sampling rates, go to the Knowledge Center [www.skinc.com](http://www.skinc.com) and search on 690-106.

\* Analysis is by liquid desorption.

### Sampling Accessories

<b>Stand for Indoor Sampling</b>	<b>690-302</b>
<b>Shelter for Outdoor Sampling</b>	<b>690-303</b>

### Analysis Accessory

**Thermal Desorption Tube, Perkin Elmer,**

0.25-inch OD x 3.5-inch length, includes screens and end caps, ea **P226530**

## SKC Limited Warranty and Return Policy

SKC products are subject to the SKC Limited Warranty and Return Policy, which provides SKC's sole liability and the buyer's exclusive remedy. To view the complete SKC Limited Warranty and Return Policy, go to [skcinc.com/warranty](http://skcinc.com/warranty).

